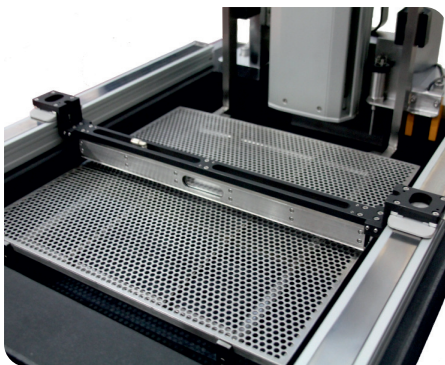


# RAPLAS

Production Additive Manufacturing



# Production Resin System

*generation. 2*

hd+ Resolution as Standard

# RAPLAS Production Resin Systems

**Rigid Granite Frame Construction** production focussed design, large easy access doors, integrated touch screen operation, with enclosed axis modules for excellent repeatability, accuracy and thermal stability.

**Industry Leading Dynamic 3 Axis Scanning System** for accuracy, speed, stability and optimum productivity.

**HD+ Resolution across the whole build area (0.0008mm)** produce accurate small parts anywhere on the platform.

**Stainless Steel Build Area & Covers** lift-off for easy access and cleaning.

**RAPLAS RPL 2/1W Dynamic Air-cooled Laser** for high productivity and low running costs.

**Interchangeable Vat Systems** available with various vat size options.

**Resin Development Kit** option to develop materials and test from small through to production volumes of materials with full support.

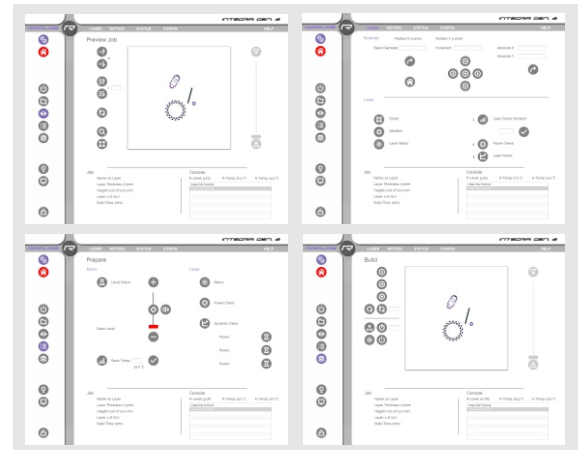


## RAPLAS Integra + Control

**RAPLAS Integra + server based control system fully integrated to Materialise Magics** for optimum part build style protocols.

Clean and efficient interface and workflow for ease of operation, with standby hibernation reducing power consumption and ensuring printer availability.

Remote access, monitoring and integrated email direct to your Raplas Support Engineer with full status and configuration reports of your machine.



## RAPLAS Powered by Materialise

**RAPLAS 'Powered by Materialise' Magics Free Customer License** provides our system customers with the Magics tools for efficient workflow and productivity.

Dedicated machine integration ensures part data integrity and accuracy is maintained with the latest industry standard fix, slice, hatch, build algorithms and protocols.



**RAPLAS Open Production Systems Flexibility** of user specification with many custom and third-party options available without lengthy customer lock-in policies. This creates a flexible SLA system with low on-going operation and maintenance costs with regional support from our professionals with many years experience in applications and service in the RP/AM Industry.

# PR 450

| Laser                           |                                       |                |
|---------------------------------|---------------------------------------|----------------|
| Wavelength                      | 354.7                                 | nm             |
| Type                            | Solid State                           | ND: YV04       |
| Frequency                       | 100 (60-200)                          | kHz Dynamic    |
| Cooling Method                  | Air                                   |                |
| Max Power (Approx.)             | 1w@100kHz, 2w@60kHz                   | Watts          |
| Dynamic Power Adjustment        | Yes                                   |                |
| Recommended Layer Thickness     |                                       |                |
| Precision                       | 0.05                                  | mm             |
| Rapid                           | 0.10 -0.25+                           | mm             |
| Standard                        | 0.15                                  | mm             |
| Optical & Scanning              |                                       |                |
| Beam Diameter at Vat (Approx.)  | 0.05 - 1.2                            | mm Dynamic     |
| Focus Method                    | Dynamic                               |                |
| HD+ Resolution (Approx.)        | 0.0008                                | mm             |
| Max Scanning Speed (Approx.)    | 25000                                 | mm/s           |
| Elevator                        |                                       |                |
| Vertical Resolution             | 0.0002                                | mm             |
| Positional Repeatability (+/-)  | 0.01                                  | mm             |
| Removable Platform              | Yes                                   | Standard       |
| No. of Build Platforms Supplied | 2                                     | Standard       |
| Vat Capacity                    |                                       |                |
| Volume (Approx.)                | 30 - 150 <i>Based on Tank Z Depth</i> | L              |
| Max Build Envelope              | 450 x 450 x 400                       | mm             |
| Interchangeable Vat             | 50 mm, Half, Full (Z=350), Custom     | Optional       |
| Software                        |                                       |                |
| Control                         | RAPLAS Integra                        |                |
| Input Data File Format          | RAPLAS Build Processor                | Magics         |
| Network Type & Protocol         | Ethernet, IEEE 802.3                  |                |
| Power                           |                                       |                |
| Voltage                         | 220-240v, 50/60Hz                     | Single-Phase   |
| Power (Approx.)                 | 15                                    | Amps           |
| Working Environment             |                                       |                |
| Ambient Temp Range              | 20-26                                 | Deg C          |
| Humidity Range                  | Less than 50%                         | Non-Condensing |
| Size & Weight                   |                                       |                |
| L x W x H (Installed)           | 1.420 x 1.030 x 1.890                 | m              |
| Weight (Approx.)                | 800                                   | kg             |
| Warranty                        |                                       |                |
|                                 | 12 months from installation           |                |

# PR 700

| Laser                           |                                       |                |
|---------------------------------|---------------------------------------|----------------|
| Wavelength                      | 354.7                                 | nm             |
| Type                            | Solid State                           | ND: YV04       |
| Frequency                       | 100 (60-200)                          | kHz Dynamic    |
| Cooling Method                  | Air                                   |                |
| Max Power (Approx.)             | 1w@100kHz, 2w@60kHz                   | Watts          |
| Dynamic Power Adjustment        | Yes                                   |                |
| Recommended Layer Thickness     |                                       |                |
| Precision                       | 0.05                                  | mm             |
| Rapid                           | 0.10 -0.25+                           | mm             |
| Standard                        | 0.15                                  | mm             |
| Optical & Scanning              |                                       |                |
| Beam Diameter at Vat (Approx.)  | 0.07 - 1.2                            | mm Dynamic     |
| Focus Method                    | Dynamic                               |                |
| HD+ Resolution (Approx.)        | 0.0008                                | mm             |
| Max Scanning Speed (Approx.)    | 25000                                 | mm/s           |
| Elevator                        |                                       |                |
| Vertical Resolution             | 0.0002                                | mm             |
| Positional Repeatability (+/-)  | 0.01                                  | mm             |
| Removable Platform              | Yes                                   | Standard       |
| No. of Build Platforms Supplied | 2                                     | Standard       |
| Vat Capacity                    |                                       |                |
| Volume (Approx.)                | 75 - 550 <i>Based on Tank Z Depth</i> | L              |
| Max Build Envelope              | 700 x 700 x 550                       | mm             |
| Interchangeable Vat             | 50 mm, Half, Full (Z=400), Custom     | Optional       |
| Software                        |                                       |                |
| Control                         | RAPLAS Integra                        |                |
| Input Data File Format          | RAPLAS Build Processor                | Magics         |
| Network Type & Protocol         | Ethernet, IEEE 802.3                  |                |
| Power                           |                                       |                |
| Voltage                         | 220-240v, 50/60Hz                     | Single-Phase   |
| Power (Approx.)                 | 15                                    | Amps           |
| Working Environment             |                                       |                |
| Ambient Temp Range              | 20-26                                 | Deg C          |
| Humidity Range                  | Less than 50%                         | Non-Condensing |
| Size & Weight                   |                                       |                |
| L x W x H (Installed)           | 1.710 x 1.320 x 1.985                 | m              |
| Weight (Approx.)                | 1300                                  | kg             |
| Warranty                        |                                       |                |
|                                 | 12 months from installation           |                |

# PR 800

| Laser                           |   |                |
|---------------------------------|---|----------------|
| Wavelength                      | 354.7   | nm             |
| Type                            | Solid State   | ND: YV04       |
| Frequency                       | 100 (60-200)  | kHz Dynamic    |
| Cooling Method                  | Air   |                |
| Max Power (Approx.)             | 1w@100kHz, 2w@60kHz   | Watts          |
| Dynamic Power Adjustment        | Yes   |                |
| Recommended Layer Thickness     |   |                |
| Precision                       | 0.05  | mm             |
| Rapid                           | 0.10 -0.25+   | mm             |
| Standard                        | 0.15  | mm             |
| Optical & Scanning              |   |                |
| Beam Diameter at Vat (Approx.)  | 0.07 - 1.2  | mm Dynamic     |
| Focus Method                    | Dynamic   |                |
| HD+ Resolution (Approx.)        | 0.0008  | mm             |
| Max Scanning Speed (Approx.)    | 25000   | mm/s           |
| Elevator                        |   |                |
| Vertical Resolution             | 0.0002  | mm             |
| Positional Repeatability (+/-)  | 0.01  | mm             |
| Removable Platform              | Yes   | Standard       |
| No. of Build Platforms Supplied | 2   | Standard       |
| Vat Capacity                    |   |                |
| Volume (Approx.)                | 75 - 550 <i>Based on Tank Z Depth and build size option</i> | L              |
| Max Build Envelope              | <b>800 x 700 x 550</b> or option of <b>800 x 800 x 600</b>  | mm             |
| Interchangeable Vat             | 50 mm, Half, Full (Z=400), Custom                           | Optional       |
| Software                        |   |                |
| Control                         | RAPLAS Integra  |                |
| Input Data File Format          | RAPLAS Build Processor                                      | Magics         |
| Network Type & Protocol         | Ethernet, IEEE 802.3  |                |
| Power                           |   |                |
| Voltage                         | 220-240v, 50/60Hz   | Single-Phase   |
| Power (Approx.)                 | 15  | Amps           |
| Working Environment             |   |                |
| Ambient Temp Range              | 20-26   | Deg C          |
| Humidity Range                  | Less than 50%   | Non-Condensing |
| Size & Weight                   |   |                |
| L x W x H (Installed)           | 1.71 x 1.32 x1.95 or 1.85 x 1.45 x 2.10                     | m              |
| Weight (Approx.)                | 1400 to 1800  | kg             |
| Warranty                        |   |                |
|                                 | 12 months from installation                                 |                |

## **Europe**

### **RAPLAS Technologies Ltd**

Building B,  
Silwood Business Park, Ascot,  
United Kingdom.

SL5 7PW

**info.uk@raplas.com**

**info.eu@raplas.com**

## **Asia**

### **RAPLAS Technologies PTE LTD**

20 Emerald Hill Road

Singapore

229302

**info.asia@raplas.com**

## **Americas**

### **RAPLAS Technologies USA**

Raplas Inc.

1720 Wright Blvd,

Schaumburg, IL 60193,

USA.

**info.us@raplas.com**